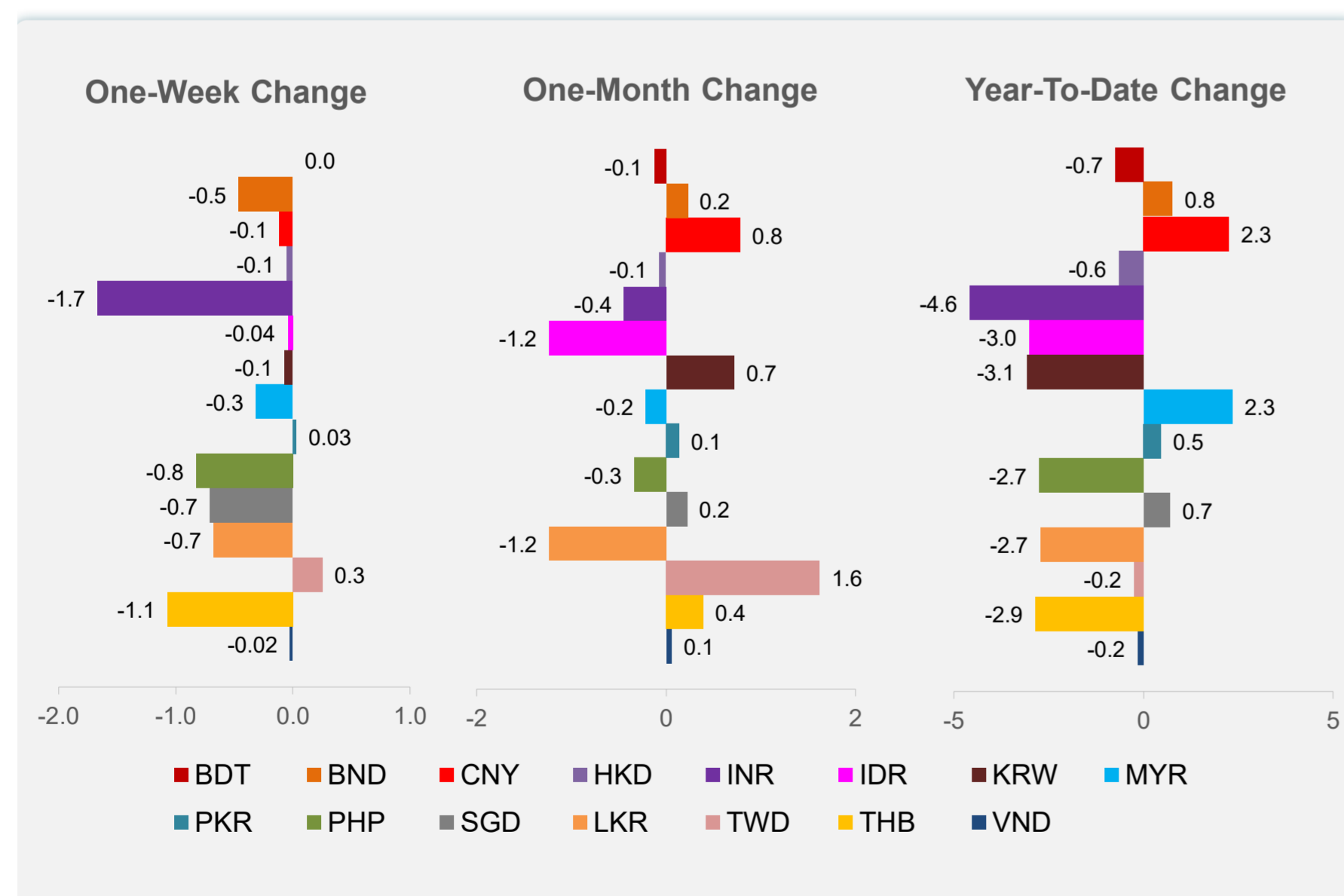
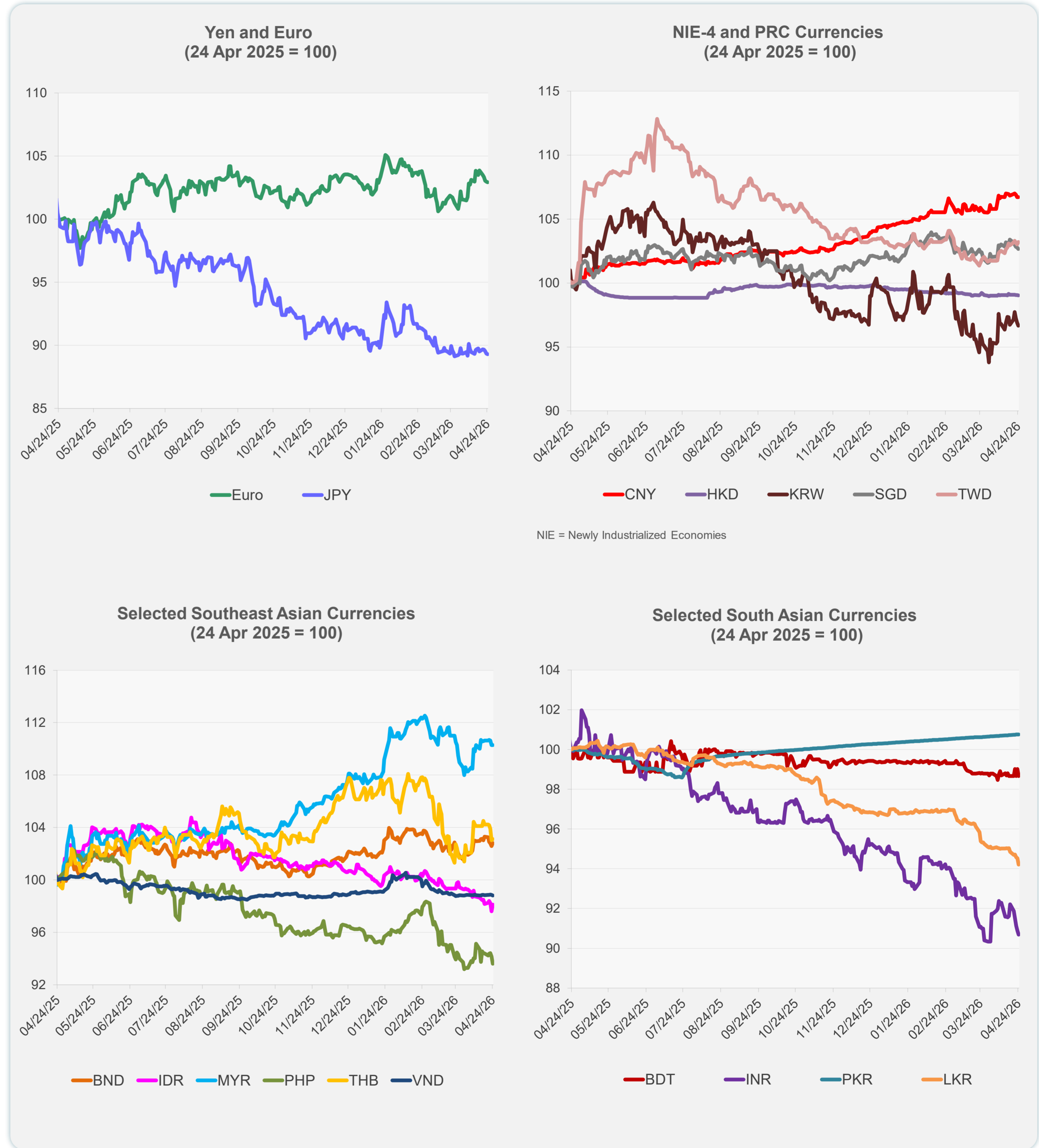
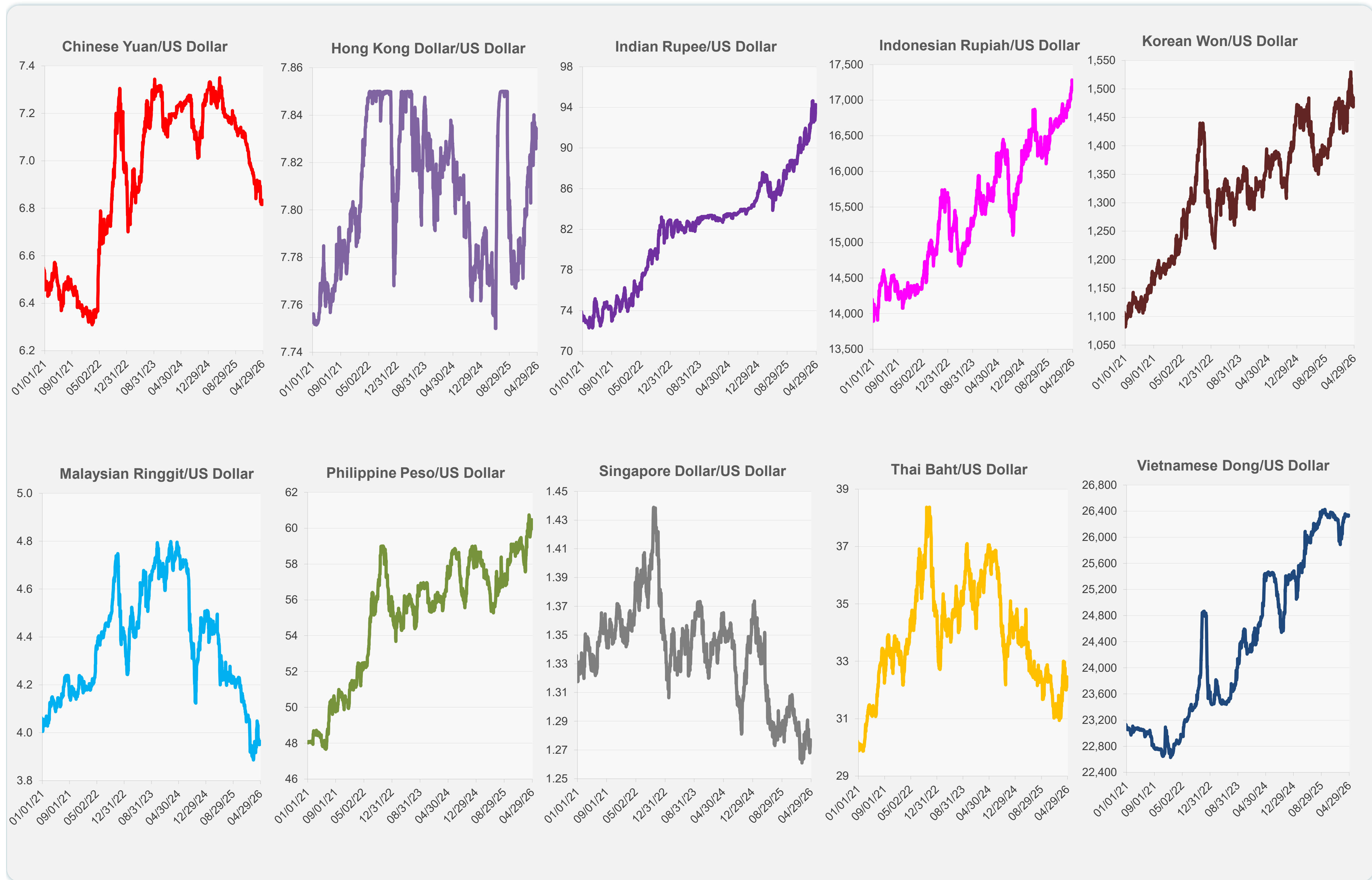


	Latest Closing	% change from Previous Day	% change from 01-Jan-26
Euro	0.85	-0.04	-0.33
Japanese yen (JPY)	159.68	-0.05	-2.32
Bangladeshi taka (BDT)	123.15	-0.37	-0.73
Brunei dollar (BND)	1.28	0.24	0.76
Chinese yuan (CNY)	6.83	-0.01	2.25
Hong Kong dollar (HKD)	7.83	-0.02	-0.65
Indian rupee (INR)	94.30	-0.23	-4.58
Indonesian rupiah (IDR)	17,192.50	0.54	-3.01
Korean won (KRW)	1,484.50	-0.24	-3.07
Malaysian ringgit (MYR)	3.97	0.00	2.35
Pakistan rupee (PKR)	278.82	0.01	0.46
Philippine peso (PHP)	60.47	-0.60	-2.75
Singapore dollar (SGD)	1.28	-0.11	0.70
Sri Lanka rupee (LKR)	318.25	-0.35	-2.72
Taipei,China NT dollar (TWD)	31.52	0.19	-0.25
Thai baht (THB)	32.43	0.09	-2.85
Vietnamese dong (VND)	26,341.00	-0.05	-0.16



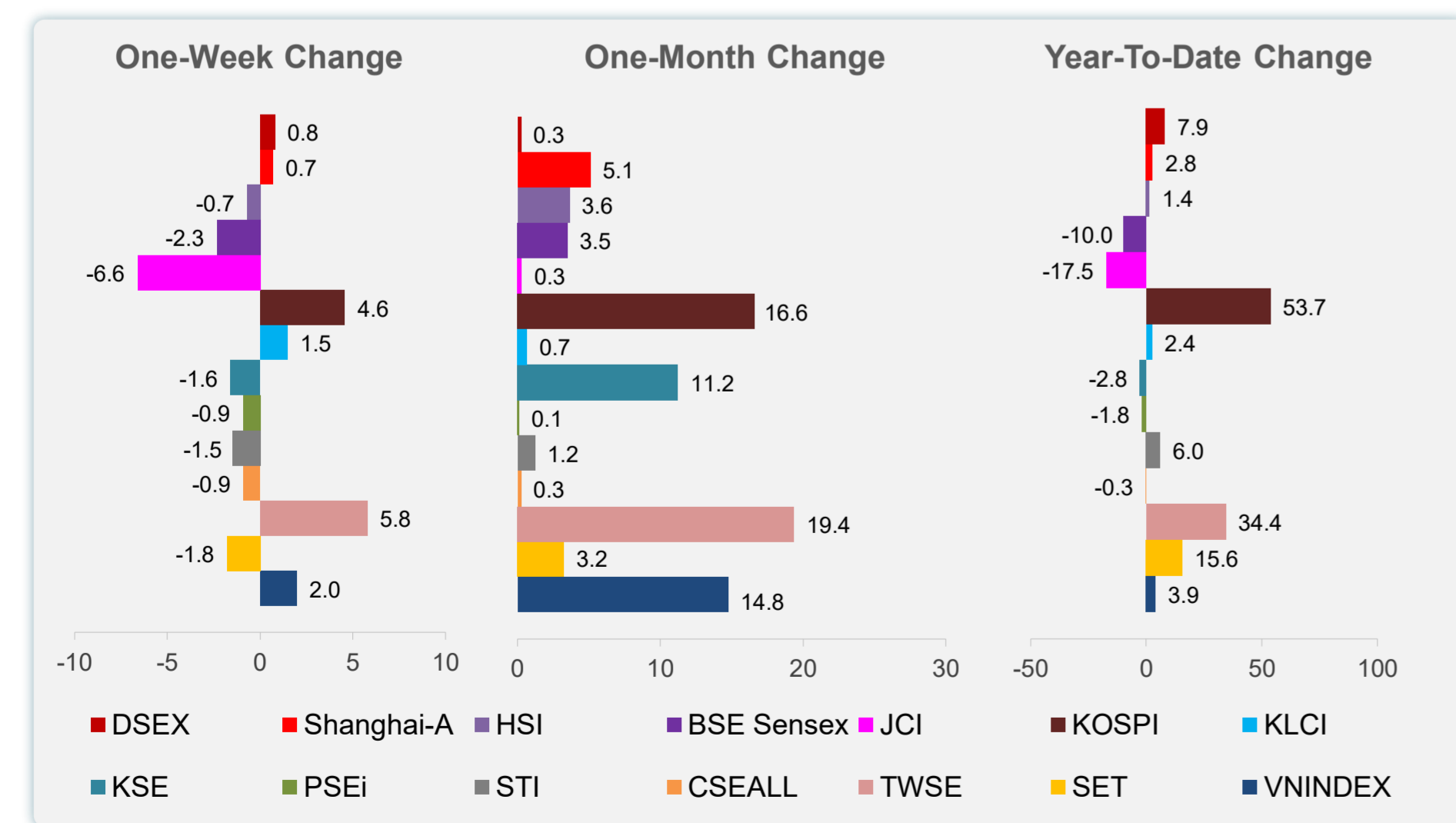
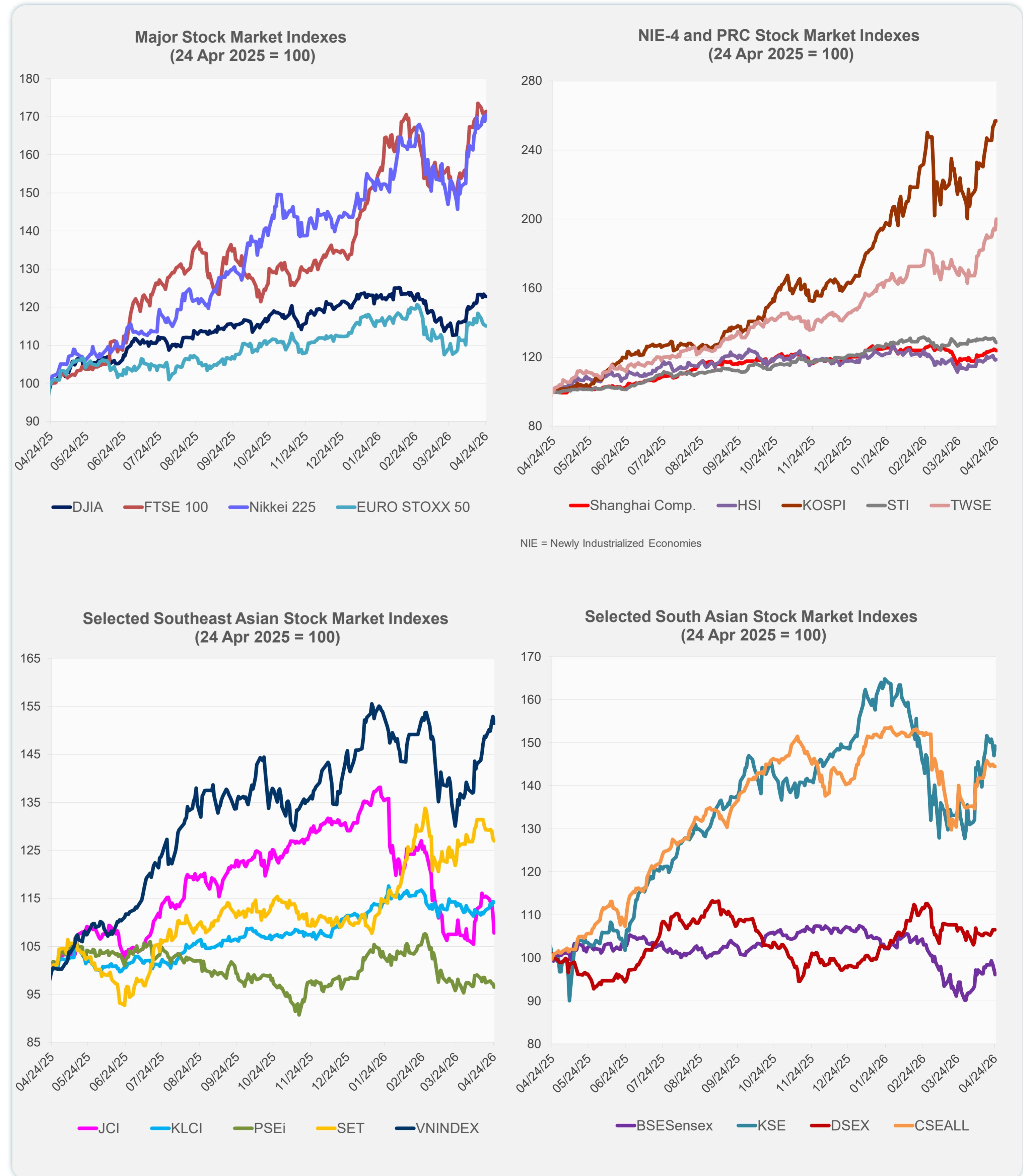
Note: Negative/Decreasing values indicate depreciation of local currency, and positive/increasing values indicate appreciation.
Source: ADB calculations using data from Bloomberg and Haver Analytics.



Source: Haver Analytics.

Daily Market Watch
STOCK INDEXES

	Latest Closing	% change from Previous Day	% change from 01-Jan-26
US Dow Jones Ind Avg	49,230.71	-0.16	2.43
US NASDAQ	24,836.60	1.63	6.86
US S&P 500	7,165.08	0.80	4.67
UK FTSE 100	14,409.07	0.51	27.95
EURO STOXX 50	5,883.48	-0.19	1.59
Japan NIKKEI 225	59,716.18	0.97	18.63
Bangladesh DSEX	5,298.59	0.00	7.90
PRC Shanghai Comp.	4,079.90	-0.33	2.80
Hong Kong, China HSI	25,978.07	0.24	1.36
India BSE Sensex	76,664.21	-1.29	-10.01
Indonesia JCI	7,129.49	-3.38	-17.55
Korea, Rep. of KOSPI	6,475.63	0.00	53.66
Malaysia KLCI	1,720.34	-0.08	2.39
Pakistan KSE 100	171,613.30	1.53	-2.75
Philippines PSEi	5,943.49	-0.67	-1.81
Singapore STI	4,922.86	-0.43	5.95
Sri Lanka CSEALL	22,567.63	0.00	-0.25
Taipei, China TWSE	38,932.40	3.23	34.42
Thailand SET	1,456.10	-0.36	15.59
Viet Nam VNINDEX	1,853.29	-0.91	3.86



Sources: ADB calculations using data from Bloomberg and CEIC Data Company.

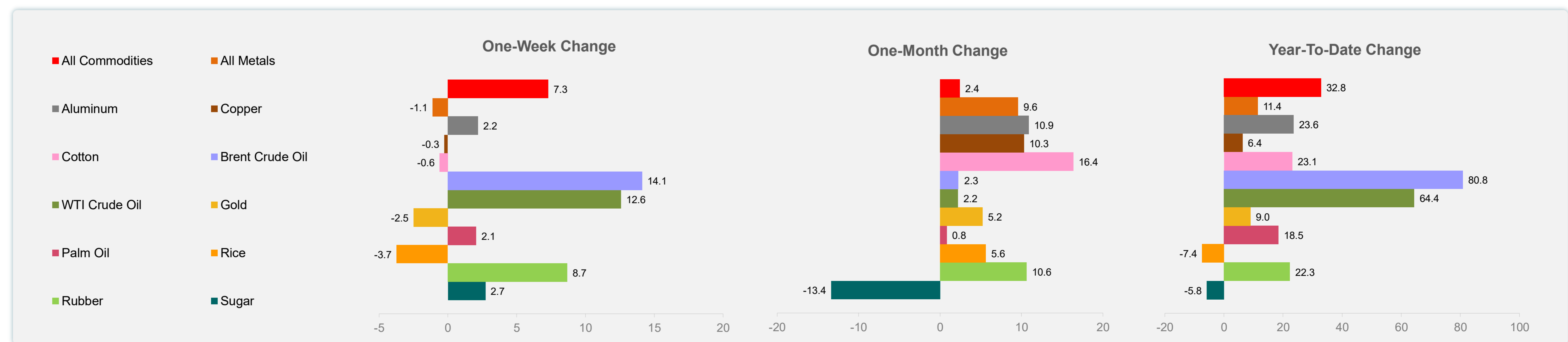
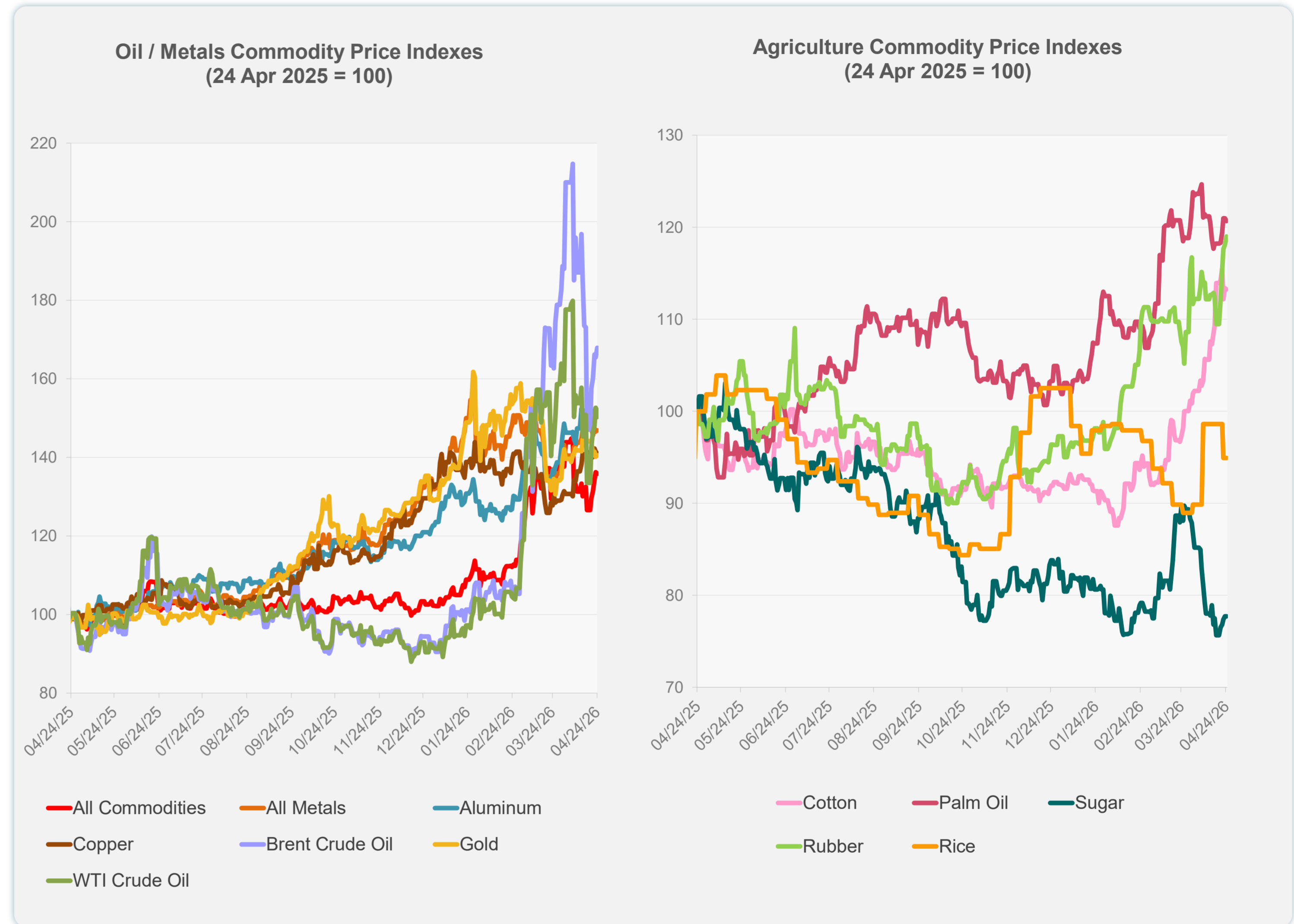


Sources: ADB calculations using data from Bloomberg and CEIC Data Company.

Daily Market Watch
COMMODITY PRICES

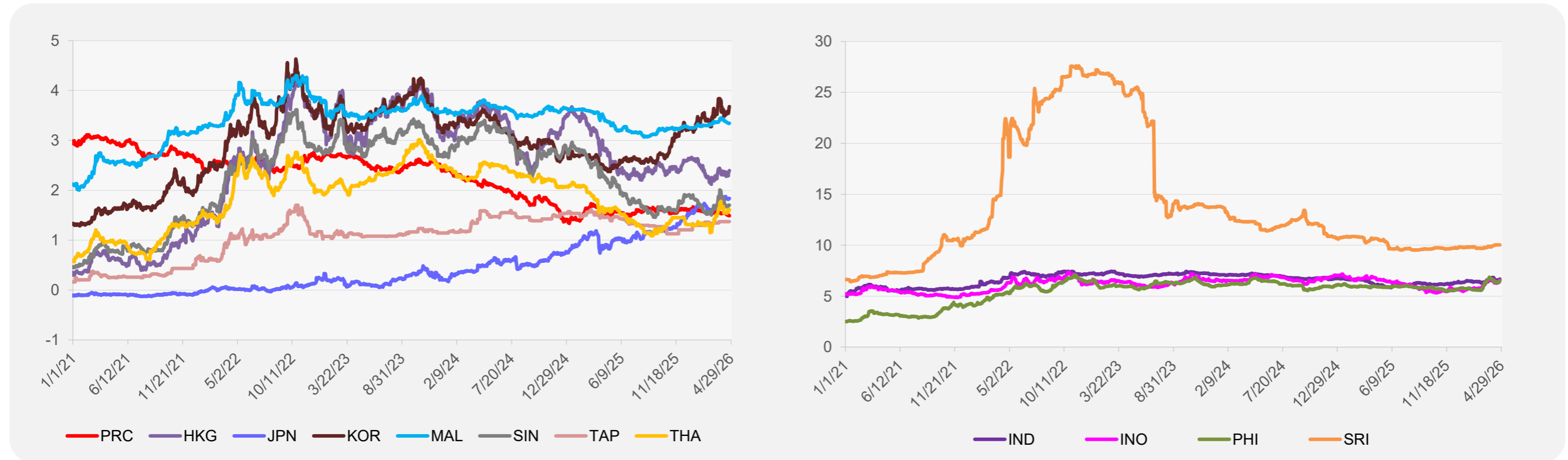
	Unit	Latest Closing	% change from Previous Day	% change from 01-Jan-26
S&P All Commodities	US\$	728.66	-0.34	32.84
S&P All Metals	US\$	494.39	0.25	11.41
Aluminum	US\$/metric ton	3,668.57	-0.64	23.60
Copper	US\$/metric ton	13,246.81	-0.41	6.37
Cotton	US cents/lb	76.36	-0.12	23.12
Brent Crude Oil	US\$/barrel	112.92	1.42	80.82
WTI Crude Oil	US\$/barrel	94.40	-1.51	64.40
Gold	US\$/troy oz	4,709.50	0.33	9.03
Palm Oil	US\$/metric tonne	1,147.43	-0.26	18.46
Rice ¹	US\$/metric ton	413.00	0.00	-7.40
Rubber ²	US\$/kg	263.00	0.77	22.33
Sugar	US cents/lb	13.93	0.00	-5.81

¹ Latest closing price from 12 April 2026.
² Singapore Exchange, Ribbed Smoked Sheet Rubber.

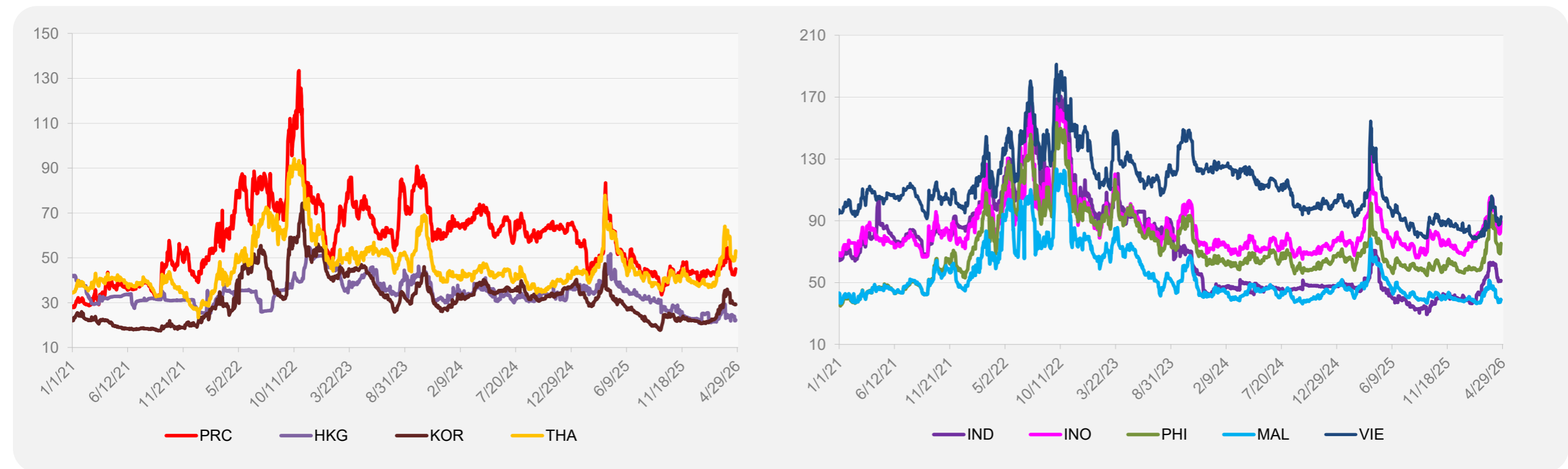


Source: ADB calculations using data from Bloomberg.

5-YEAR LOCAL CURRENCY GOVERNMENT BOND YIELDS (%)



5-YEAR CREDIT DEFAULT SWAP¹



¹ In USD and based on sovereign bonds.
Source: ADB calculations using data from Bloomberg.